



TECHNIQUE GUIDE

FEATURES:

- True match to the Pantone colour system
- 108 marker colours
- Brush and chisel nib
- Refillable
- 108 matching inks
- Pigmented & lightfast - colours won't fade
- Water-based
- Fast drying
- No odour
- Non toxic
- Waterproof once dry
- Perfect for layering
- Can create watercolour effects

TECHNIQUES:



Monotone Layering:

- Apply one layer (the first layer = true Pantone colour).
- To achieve a darker tone apply a second layer of the same colour.



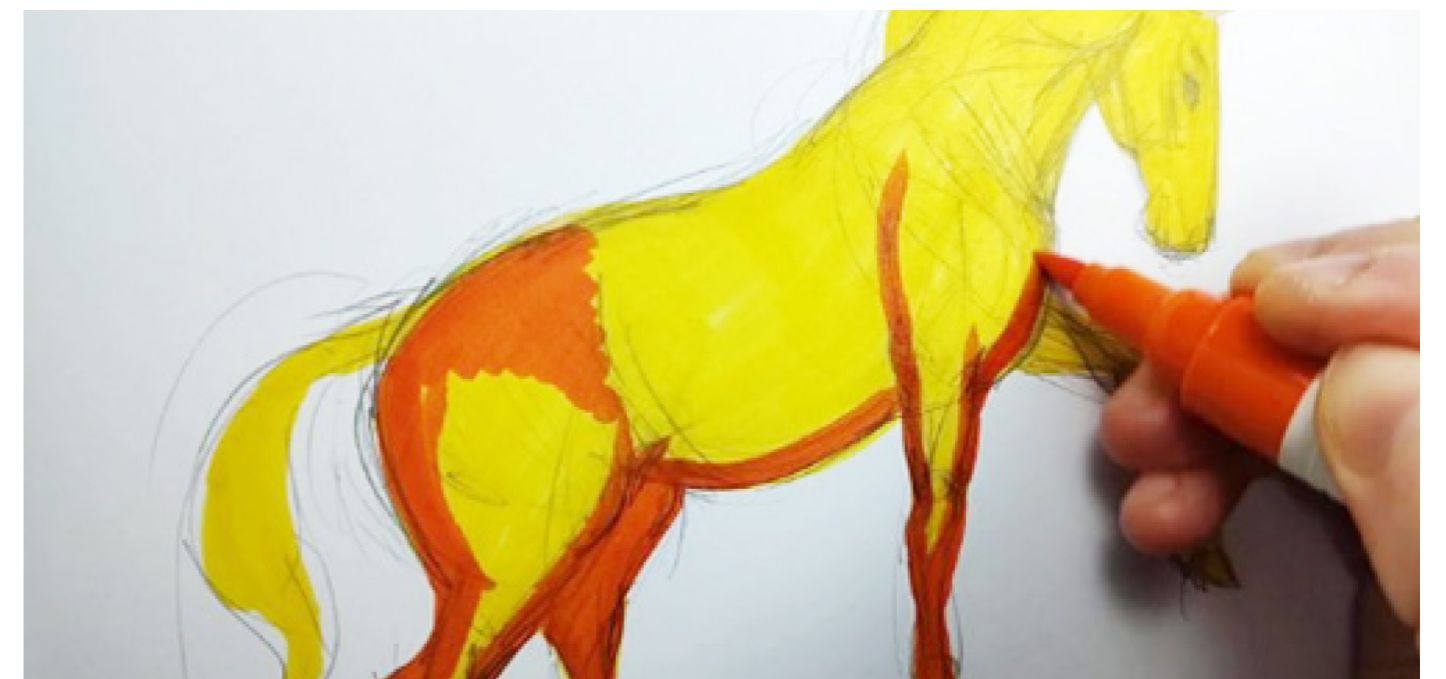
@jacslade

TECHNIQUES:



Mixed Layering:

- Apply 1 layer of the lightest colour first (the first layer = true pantone colour).
- Apply a second layer of a darker shade from a different colour family.
- Colours are transparent and will layer over each other.



@pip_tacla

TECHNIQUES:



Blending:

- The markers contain a unique binder which is different from traditional alcohol and watercolour markers. For best blending results use a smooth heavy weight paper or cardstock.
- For smoother results work in a circular motion using the brush nib.
- Apply 1 layer of your lightest colour.
- Apply a second layer of a darker shade of the same colour family.
- To blend go over the area with your lightest colour or try using a pale grey.
- For contrast or to create shadow - apply a darker shade from a different colour family.



@pip_tacla

TECHNIQUES:

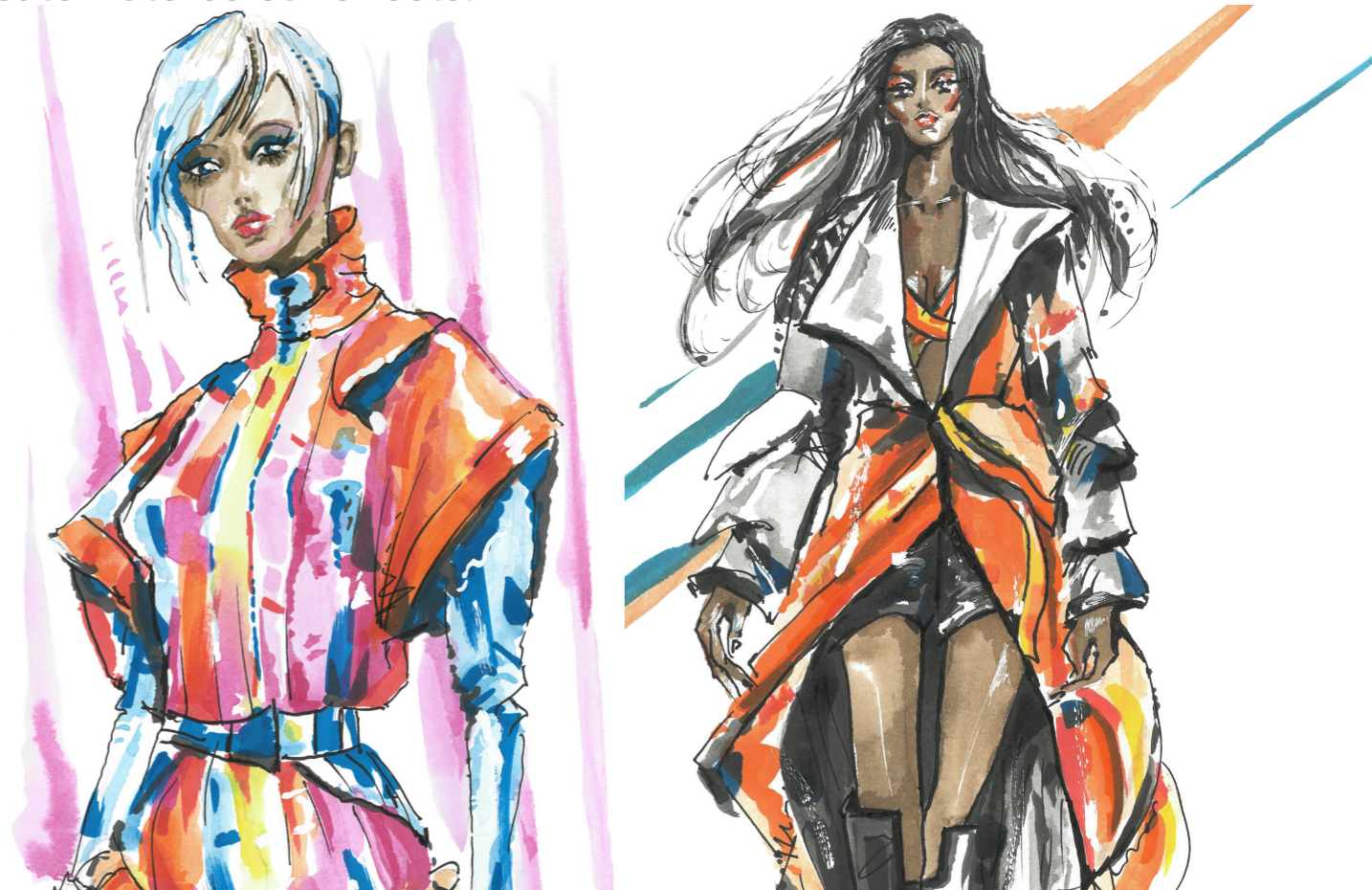


Watercolour Effects:

- The markers are waterbased but will be waterproof once dry.
- Apply 1-2 layers of marker and whilst wet apply small amounts of water with a soft brush to create a watercolour effect.
- When first applied to the surface, the markers can be diluted to some extent with water.
- For best watercolour effects use a good quality heavy weight (300gsm) hot pressed watercolour paper or mixed media paper.

Palette Blending:

- You can also apply the marker to a plastic palette or acetate then using a wet brush pick up the marker colour from the palette to create watercolour effects.



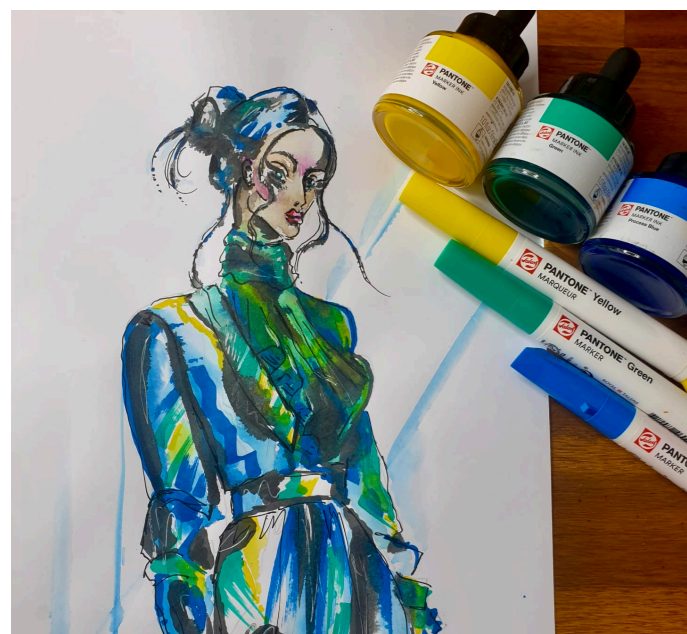
@michellepikeillustration

TECHNIQUES:



Talens | Pantone Ink:

- Each of the 108 marker colours has a matching ink which can be used to refill the marker or for mixed media and inking techniques.
- The Talens-Pantone inks can be applied directly with the pipette or using a soft brush.



@michellepikeillustration



Canvas:

- Apply markers on a pre gesso canvas.
- Markers will blend easy on canvas.
- Allow up to 12 hours until dry.



TECHNIQUES:



Highlights:

- Once dry the Talens-Pantone inks are waterproof.
- For highlights try using acrylic based white ink – such as Amsterdam Acrylic Ink or Pigma Micron Gelly Roll white.
- Apply the acrylic ink or Gelly Roll over the top of the marker once dry.



@katjavanstrijk

Outlines:

- Talens-Pantone markers and inks are waterbased and pigment based and waterproof once dry.
- To create outlines use a pigment pen such as Sakura Pigma Micron. Apply under or over the Talens-Pantone marker.

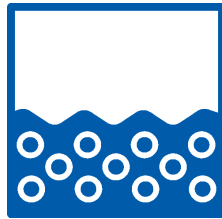


@pip_tacla



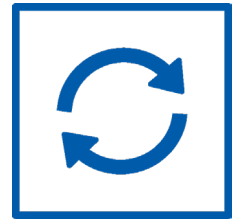
108 PANTONE COLOURS

Sketch, draw & design in Pantone colours! With this collection, artists & designers can work directly in Pantone colours, with just one stroke.



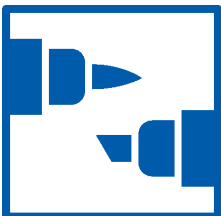
LIGHTFAST PIGMENT

The markers & ink refills contain pigment ink. This makes the ink lightfast, so artists can display their work without it fading in sunlight.



REFILLABLE

Talens | Pantone markers are refillable using the marker ink available in the same 108 colours. This combination with the high-quality nibs, means that the markers have a long life span.



BRUSH & CHISEL NIB

With a brush and chisel tip the Talens | Pantone markers offer the ultimate flexibility. The brush tip is perfect for details & fine lines while the chisel tip works for broad strokes & bold colour blocks.



WATER-BASED & WATER-PROOF

The ink is not only pigmented but also water-based. It is odour-free & waterproof once dry.



LEARN MORE ABOUT THE TALENS | PANTONE COLLECTION