

48 Variety Colors

NO	Ink color	XBR-6	XBR-6B1	XBR-6C	XBR-6D	XBR-6E	XBR-6F	XBR-6G	XBR-12	XBR-24	XBR-48
#00	Blender										
#3	Yellow		●						●	●	●
#4	Deep Yellow		●	●					●	●	●
#5	Orange					●			●	●	●
#205	Coral Red							●			
#7	Pale Orange			●					●	●	●
#107	Salmon Pink					●			●	●	●
#407	Woody Brown			●					●	●	●
#9	Naples Yellow			●					●	●	●
#110	Dark Brown				●				●	●	●
#12	Brown		●					●	●	●	●
#14	Raw Sienna			●					●	●	●
#18	Vermilion					●			●	●	●
#19	Red		●						●	●	●
#20	Pink		●						●	●	●
#221	Rose Red					●			●	●	●
#421	Magenta Pink					●			●	●	●
#22	Burgundy					●			●	●	●
#222	Fuchsia					●			●	●	●
#123	Lilac							●			
#223	Bordeaux								●	●	●
#24	Purple								●	●	●
#124	Iris					●			●	●	●
#224	Light Purple					●			●	●	●
#25	Cerulean Blue					●			●	●	●
#125	Sky Blue						●		●	●	●
#225	Steel Blue						●		●	●	●
#226	Emerald Green				●				●	●	●
#426	Peacock Green							●			
#27	Yellow Green				●				●	●	●
#28	Blue Green Light				●				●	●	●
#128	Ice Green				●				●	●	●
#29	Green		●						●	●	●
#130	Sap Green				●				●	●	●
#31	Viridian						●		●	●	●
#32	Fresh Green							●			
#36	Blue		●						●	●	●
#137	Aqua Blue								●	●	●
#237	Light Sky Blue								●	●	●
#238	Lavender								●	●	●
#43	Prussian Blue								●	●	●
#47	Raw Umber				●				●	●	●
#49	Black								●	●	●
#44	Cool Gray	●									
#144	Dark Warm Gray	●		●							
#45	Warm Gray	●									
#145	Light Warm Gray	●									
#46	Dark Cool Gray	●									
#153	Light Cool Gray	●									

RELATED ITEM

P I G M A
MICRON™

Water-based Pigment marker for Drawing, Illustration and MANGA.
Various nibs give wide range of expression.

XSDK

- Ink dries quickly
- Ink does not bleed through the thinnest paper
- Archival quality ink : waterproof, chemical-proof and fade resistant

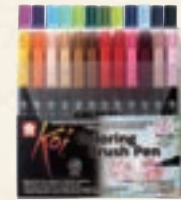
Koi Water Colors™

XNCW

- Pancakes of water-colors, a palette and water-brush in a case.
- 12, 18, 24, 30, 36, 48, 60 and 72-colors sets are available.
- 12, 24 metallic and fluorescent color sets are also available.
- The self-moistening water-brush with a reservoir barrel is the best for field painting.



XBR-12



XBR-24



XBR-48

SAKURA COLOR PRODUCTS CORPORATION
1-6-20, Morinomiya Chuo, Chuo-ku, Osaka 540-8508, JAPAN
Tel : +81-6-6910-8824 Fax: +81-6-6910-8834
URL: www.craypas.com/global E-mail: overseas@craypas.co.jp

Please contact your local distributor

SAKURA AUSTRALIA
www.sakuraaustralia.com.au



Koi™ Coloring Brush Pen



Ideal for Illustration

Materials: #7 Pale Orange, #237 Light Sky Blue, #238 Lavender, #223 Bordeaux, #00 Blender

- Outline with the Pigma Micron. Use pale colors for the base layer.
- Paint dark colors over the base layer. Paint shadow colors on the top layer.
- Extend with the Blender (#00). Try adding different color.
- Use the Blender (#00) for gradation effect. Pigma Micron and Koi Coloring Brush Pen make a good combination.

Ideal for Brush lettering

Materials: #128 Ice Green, #226 Emerald Green, #29 Green, #00 Blender

- Write a letter with a light shade color. Apply a second layer in same color (#128).
- Use the Blender (#00) to make gradation.
- Apply the next layer with a medium shade color (#226) then use the Blender (#00). Apply the next layer with a dark shade color (#29) and then use the Blender (#00).
- Color blending gives a fantastic effect.



Made in JAPAN



Follow us on Instagram @sakuracolorproducts



Koi™ Coloring Brush Pen

Water-based brush pen for Drawing and Illustration

Convenient way to add vibrant colors to sketch, cartoon, illustration, or so on. The 48 transparent ink colors blend easily to create a multitude of hues and effects. Use the colorless Blender (XBR#00) to create gradations.

- Flexible brush nib gives various line width for drawing
- Water-based dyestuff ink
- Transparent and vivid 48 colors
- Colors can be blended and graded by Blender (XBR#00) or brushes with water

Koi Coloring Brush Pen *Basic* XBR-6B1

- #3 Yellow
- #12 Brown
- #19 Red
- #20 Pink
- #29 Green
- #36 Blue



©2019 Roselin Estephania

Koi Coloring Brush Pen *Portrait* XBR-6C

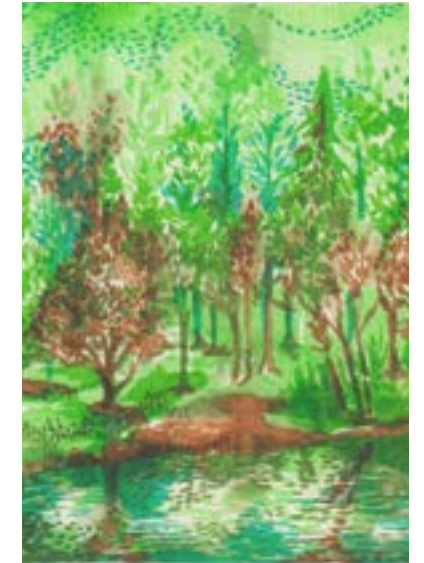
- #4 Deep Yellow
- #7 Pale Orange
- #407 Woody Brown
- #9 Naples Yellow
- #14 Raw Sienna
- #144 Dark Warm Gray



©2019 Vasileva Elizaveta Valerievna

Koi Coloring Brush Pen *Nature* XBR-6D

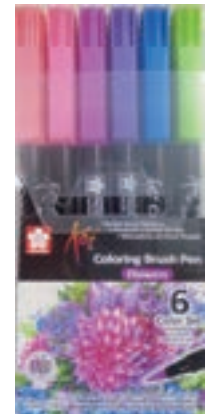
- #110 Dark Brown
- #226 Emerald Green
- #28 Blue Green Light
- #128 Ice Green
- #130 Sap Green
- #47 Raw Umber



©2019 Nicole Black

Koi Coloring Brush Pen *Flowers* XBR-6E

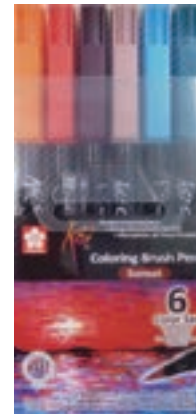
- #107 Salmon Pink
- #421 Magenta Pink
- #124 Iris
- #224 Light Purple
- #25 Cerulean Blue
- #27 Yellow Green



©2019 Nicole Black

Koi Coloring Brush Pen *Sunset* XBR-6F

- #5 Orange
- #18 Vermillion
- #22 Burgundy
- #222 Fuchsia
- #125 Sky Blue
- #31 Viridian



©2019 Roselin Estephania

Koi Coloring Brush Pen *Pastel* XBR-6G

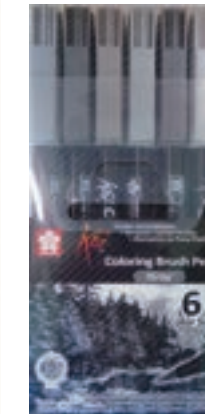
- #205 Coral Red
- #123 Lilac
- #426 Peacock Green
- #32 Fresh Green
- #237 Light Sky Blue
- #238 Lavender



©2019 Roselin Estephania

Koi Coloring Brush Pen *Gray* XBR-6

- #44 Cool Gray
- #144 Dark Warm Gray
- #45 Warm Gray
- #145 Light Warm Gray
- #46 Dark Cool Gray
- #153 Light Cool Gray



©2019 Roselin Estephania