

# PIGMA™ series



<b>XSDK003</b> Line width: 0.15mm	49 Black	117 Sepia			
<b>XSDK005</b> Line width: 0.2mm	49 Black	19 Red	36 Blue	29 Green	5 Orange
	12 Brown	21 Rose	24 Purple	117 Sepia	
<b>XSDK01</b> Line width: 0.25mm	49 Black	19 Red	36 Blue	29 Green	5 Orange
	12 Brown	21 Rose	24 Purple	117 Sepia	
<b>XSDK02</b> Line width: 0.3mm	49 Black	19 Red	36 Blue	29 Green	
<b>XSDK03</b> Line width: 0.35mm	49 Black	19 Red	36 Blue	29 Green	117 Sepia
<b>XSDK04</b> Line width: 0.4mm	49 Black	19 Red	36 Blue	29 Green	
<b>XSDK05</b> Line width: 0.45mm	49 Black	19 Red	36 Blue	29 Green	5 Orange
	12 Brown	21 Rose	24 Purple	117 Sepia	3 Yellow
	22 Burgundy	32 Fresh Green	188 Royal Blue	280 Hunter Green	243 Blue Black
<b>XSDK08</b> Line width: 0.5mm	49 Black	19 Red	36 Blue	29 Green	



<b>XSDK-PN</b> Line width: ~0.5mm	49 Black	19 Red	36 Blue	21 Rose	24 Purple
	117 Sepia	22 Burgundy	243 Blue Black		



<b>XSDK-BR</b>	49 Black	19 Red	36 Blue	29 Green	5 Orange
	12 Brown	21 Rose	24 Purple	117 Sepia	



<b>XSDK1</b> Line width: 1.0mm	49 Black	19 Red	36 Blue	117 Sepia
<b>XSDK2</b> Line width: 2.0mm	49 Black			
<b>XSDK3</b> Line width: 3.0mm	49 Black			

Made in Japan

## Coloring materials when drawing with PIGMA™

### Koi™ Coloring Brush Pen

- Flexible brush pen
- Water-based dyestuff ink
- Colors can be blended by Blender (XBR#00) or brushes with water
- Transparent and vivid 48 colors



### Koi Water Colors™ Pocket Field Sketch Box

- Pancakes of water-colors, a palette and a water-brush in a pocket-sized case
- 12, 18, 24, 30, 36 and 48 colors available
- The self-moistening water-brush with a reservoir barrel is the best for field painting



### SAKURA COLOR PRODUCTS CORPORATION

1-6-20, Morinomiya Chuo, Chuo-ku, Osaka, 540-8508 JAPAN  
 TEL: +81-6-6910-8824 FAX: +81-6-6910-8834  
 E-mail: [overseas@craypas.co.jp](mailto:overseas@craypas.co.jp)  
 URL: <http://www.craypas.com/global>

Please contact your local agent



SAKURA AUSTRALIA  
[www.sakuraaustralia.com.au](http://www.sakuraaustralia.com.au)



for Drawing, Illustration and MANGA

Made in Japan



# PIGMA™

for Drawing, Illustration and MANGA

The world's first water-based pigmented ink "PIGMA" was invented by Sakura Color Products Corp. in 1982.

- Ink dries quickly
- Ink does not bleed through the thinnest paper
- Archival quality ink - waterproof, chemical-proof and fade resistant

Various nibs give wide range of expression



High quality waterproof ink does not run with water.

## The Archival Quality Ink

Waterproof and fade resistant



## Ideal for Still-Life Drawing

Draw outlines with MICRÒN™



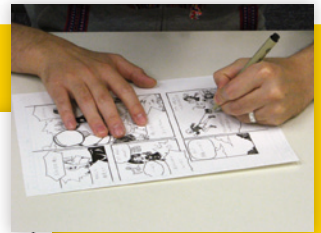
Color with Koi Coloring Brush Pen



## Ideal for MANGA Drawing

Draw outlines and shades with

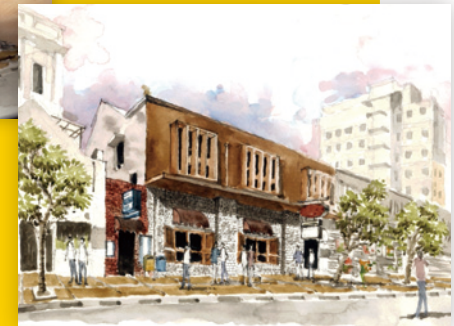
MICRÒN™ PIGMA™ BRUSH™ GRAPHIC™



Color with Koi Water Colors™ Pocket Field Sketch Box



Draw details with MICRÒN™



## Ideal for Landscape Drawing



SAKURA COLOR PRODUCTS CORP.

by Yank Frank (Indonesia)