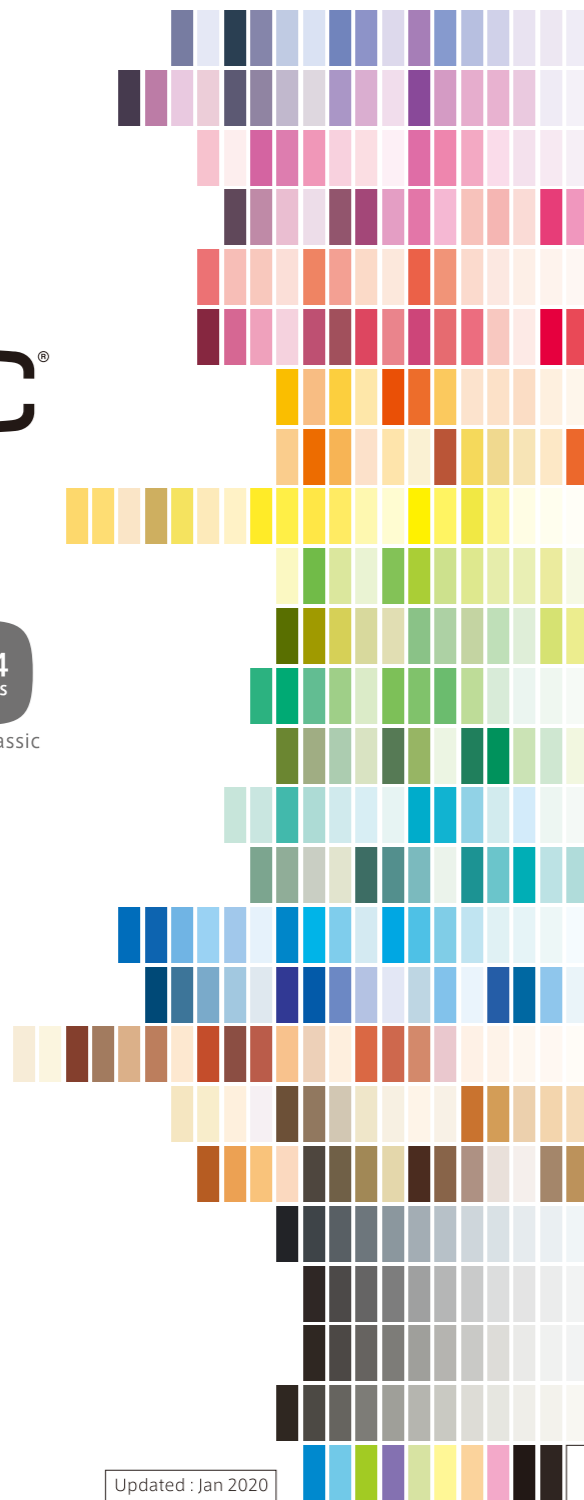


# COPIC®

358 colors  
copic sketch

180 colors  
copic ciao

214 colors  
copic classic



Updated : Jan 2020

.Too

## The highest quality markers

Copic markers were developed back in 1987 and now distributed in more than 70 countries around the world and receiving international acclaim. These versatile markers are popular in a wide range of fields such as commercial design, comics/manga, illustration, caricature, cardmaking or model kits painting. Copic markers are also used in activities at care centers or nursing homes and bringing the creative joy to many people regardless of age.



**IMPORTANT:**

- Copic ink dries quickly. Always replace the cap after use.
- It is recommended to work with a piece of paper under your artwork to ensure the ink does not bleed through onto your workplace.
- Copic is long-life, economical marker system. All types of Copic are refillable, have replaceable nibs.

**CAUTION:**  
Due to a chemical reaction of the dye-based Copic ink with plasticizers contained in vinyl (such as PVC), color staining may occur. It's preferable to avoid putting up your artwork colored in Copic directly on the wallpaper.

## FAQ Frequently Asked Questions

Visit FAQ page on Copic official website  
<https://copic.jp/en/support/>

**Q Do you have any recommended type of Copic for beginners?**  
For beginners, we absolutely recommend Copic Ciao marker. It's also good idea to purchase the well-balanced Ciao 24 colors set which contains all the basic colors.

**Q Sketch vs. Ciao**  
Sketch is the standard marker and Ciao is the beginner marker in Copic family. Sketch has more colors and holds more ink. Ciao is less expensive, but they need to be refilled sooner and has the least color options. You can airbrush with Sketch but Ciao is not ABS (airbrushing system) compatible. Both have replacement nibs and the quality of ink is completely same.

**Q Is it allowed to take Copic Ink and/or Air Can as a carry-on onto a plane?**  
Since Copic Ink is flammable liquid, it is prohibited from carry-on and checked baggage by Aviation Law. This aviation law is also applied to aerosol cans containing compressed gas, but it is allowed as checked baggage. 2kg per person (almost the same amount as 30pcs of D60N Air Can) is allowed on the plane as checked baggage. For further information, please contact airline company or Japan Civil Aviation Bureau (a division of the Ministry of Land, Infrastructure, Transport and Tourism).

**Q Copic ink stays on my hands.**  
Copic ink is dye ink. It takes a little time to remove dye stains from the skin completely. Try regular soap and warm water first to see how much of it you can get off. You may use cleansing milk, oil-based makeup remover or #0 Colorless Blender.

**Q I spilled Copic ink on my clothes.**  
Copic ink is alcohol-based dye ink and cannot be easily removed from fabric. We strongly recommend that you seek the advice of the dry-cleaner's shop.

**Q Tell me the appropriate storage method.**  
Direct sunlight and high temperatures should be avoided.

**Q How the Copic markers should be stored? Flat or vertical?**  
Basically it would make no big difference whether you store your markers either upright or on their side as long as the ink is nearly-filled. In our pre-made sets, markers are placed with the Super Brush nib side up. However when the ink amount has decreased, we recommend you to keep Copic markers flat so that the ink saturates evenly on both nibs.

**Q Could you tell me the size of area I can color with a single marker?**  
Below is the average number of B4 size (257mm x 364mm) paper when painting whole area evenly with Broad nib:  
Sketch: Approx. 3.7 sheets    Classic: Approx. 5 sheets  
Ciao: Approx. 2.7 sheets    Wide: Approx. 9 sheets

**Q What is a difference between 100 Black and 110 Special Black?**  
100 Black is a slightly bluish black which will fit with Cool Grays. On the other hand, 110 Black is a bit reddish and we can say that it's closer to "ink black" or "deep black" compared with 100, and will fit with the Neutral Grays. The difference between these two blacks is very subtle but the blending amount of dyestuffs is greater in 100 Black.

A comparison by type of Copic	COPIC sketch	COPIC ciao	COPIC classic	COPIC WIDE
Shape	Oval	Round	Square	Wide oval
Number of colors	358 colors	180 colors	214 colors	
Original Marker (empty marker without ink)	○	×	○	○
Refillable with Copic Ink	○	○	○	○
The number of times that one bottle can refill	Applox.7 times	Applox.9 times	Applox.5 times	Applox.3.5 times
Rough indication amount per refill	Applox.1.8ml	Applox.1.4ml	Applox.2.5ml	Applox.3.5ml
Refill amount for Copic Original (empty marker)	Applox.3ml		Applox.4ml	Applox.6ml
Nib replacement	○	○	○	○
Types of nib (★= Standard nib)	★Super Brush ★Medium Broad Sketch Fine	★Super Brush ★Medium Broad	★Standard Fine Super Fine Semi Broad Calligraphy 3mm ★Standard Broad Soft Broad Calligraphy 5mm Round Brush	★Extra Broad
Compatibility with Copic Airbrushing System (ABS)	○	×	○	×



Too Marker Products Inc.  
[copic.jp/en](https://copic.jp/en)

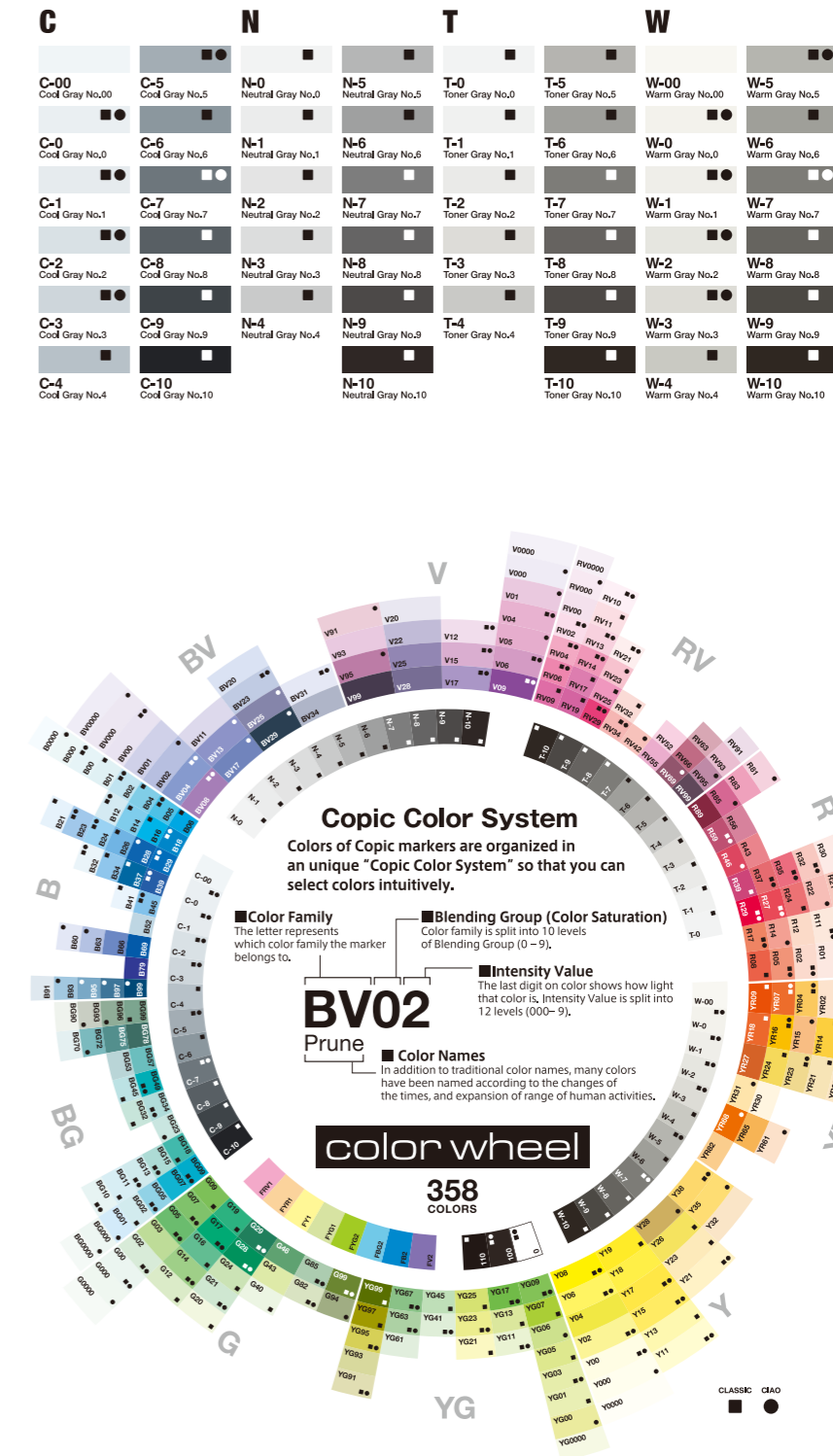
※Copyright © 2019 Too Corporation All rights reserved.  
※The information in this manual is as of Jan 2020. It may change without prior notice for various reasons.  
※As a manufacturer we have responsibility in the quality of the product that we produce. If a manufacturing defect is found, we will be happy to replace your product.  
※This catalog is for domestic use. Indicated prices are applicable within Japan only.

BV	V	RV	R	YR	Y	YG			
BV0000 Pale Thistle	V0000 Rose Quartz	RV0000 Evening Primrose	RV25 Dog Rose Flower	R0000 Pink Beryl	R27 Cadmium Red	YR0000 Pale Chiffon	YR18 Sanguine	Y0000 Yellow Fluorite	YG0000 Lily White
BV000 Iridescent Mauve	V000 Pale Heath	RV000 Pale Purple	RV29 Crimson	R000 Cherry White	R29 Lipstick Red	YR000 Silk	YR20 Yellowish Shade	Y000 Pale Lemon	YG00 Mimosa Yellow
BV00 Mauve Shadow	V01 Heath	RV00 Water Lily	RV32 Shadow Pink	R00 Pinkish White	R30 Pale Yellowish Pink	YR00 Powder Pink	YR21 Cream	Y00 Barium Yellow	YG01 Green Bice
BV01 Viola	V04 Lilac	RV02 Sugared Almond Pink	RV34 Dark Pink	R01 Pinkish Vanilla	R32 Peach	YR01 Peach Puff	YR23 Yellow Ochre	Y02 Canary Yellow	YG03 Yellow Green
BV02 Prune	V05 Azalea	RV04 Shock Pink	RV42 Salmon Pink	R02 Rose Salmon	R35 Coral	YR02 Light Orange	YR24 Pale Sepia	Y04 Acacia	YG05 Salad
BV04 Blue Berry	V06 Lavender	RV06 Cerule	RV52 Cotton Candy	R05 Salmon Red	R37 Carmine	YR04 Chrome Orange	YR27 Tuscan Orange	Y06 Yellow	YG06 Yellowish Green
BV08 Blue Violet	V09 Violet	RV09 Fuchsia	RV55 Hollyhock	R08 Vermilion	R39 Garnet	YR07 Cadmium Orange	YR30 Macadamia Nut	Y08 Acid Yellow	YG07 Acid Green
BV11 Soft Violet	V12 Pale Lilac	RV10 Pale Pink	RV63 Begonia	R11 Pale Cherry Pink	R43 Bougainvillea	YR09 Chinese Orange	YR31 Light Reddish Yellow	Y11 Pale Yellow	YG09 Lettuce Green
BV13 Hydrangea Blue	V15 Mallow	RV11 Pink	RV66 Raspberry	R12 Light Tea Rose	R46 Strong Red	YR12 Loquat	YR61 Spring Orange	Y13 Lemon Yellow	YG11 Mignonette
BV17 Deep Reddish Blue	V17 Amethyst	RV13 Tender Pink	RV69 Peony	R14 Light Rouge	R56 Currant	YR14 Caramel	YR65 Alca	Y15 Cadmium Yellow	YG13 Chartreuse
BV20 Dull Lavender	V20 Wisteria	RV14 Begonia Pink	RV91 Grayish Cherry	R17 Lipstick Orange	R59 Cardinal	YR15 Pumpkin Yellow	YR68 Orange	Y17 Golden Yellow	YG17 Grass Green
BV23 Grayish Lavender	V22 Ash Lavender	RV17 Deep Magenta	RV93 Smoky Purple	R20 Blush	R81 Rose Pink	YR16 Apricot	YR82 Mellow Peach	Y18 Lightning Yellow	YG21 Anise
BV25 Grayish Violet	V25 Pale Blackberry	RV19 Red Violet	RV95 Baby Blossoms	R21 Sardonyx	R83 Rose Mist			Y19 Napoli Yellow	
BV29 Slate	V28 Eggplant	RV21 Light Pink	RV99 Argyle Purple	R22 Light Prawn	R85 Rose Red			Y21 Buttercup Yellow	
BV31 Pale Lavender	V91 Pale Grape	RV23 Pure Pink		R24 Prawn	R89 Dark Red			Y23 Yellowish Beige	
BV34 Bluebell	V93 Early Grape							Y26 Mustard	
	V95 Light Grape							Y28 Lionet Gold	
	V99 Aubergine							Y32 Cashmere	
								Y35 Maize	
								Y38 Honey	

● Available in Copic Classic (214 colors)  
 ● Available in Copic Ciao (180 colors)  
 \* All 358 colors are available in Copic Sketch and Copic Ink

G	BG	B	E
YG23 New Leaf	G0000 Crystal Opal	G20 Wax White	BG0000 Snow Green
YG25 Cajadon Green	G000 Pale Green	G21 Lime Green	BG000 Pale Aqua
YG41 Pale Cobalt Green	G00 Jade Green	G24 Willow	BG01 Aqua Blue
YG45 Cobalt Green	G02 Spectrum Green	G28 Ocean Green	BG02 New Blue
YG61 Pale Moss	G03 Meadow Green	G29 Pine Tree Green	BG05 Holiday Blue
YG63 Pea Green	G05 Emerald Green	G40 Dim Green	BG07 Petroleum Blue
YG67 Moss	G07 Nile Green	G43 Pistachio	BG09 Blue Green
YG91 Putty	G09 Veronese Green	G46 Mistotee	BG10 Cool Shadow
YG93 Grayish Yellow	G12 Sea Green	G82 Spring Dim Green	BG11 Moon White
YG95 Pale Olive	G14 Apple Green	G85 Verdigris	BG13 Mint Green
YG97 Spanish Olive	G16 Malachite	G94 Grayish Olive	BG15 Aqua
YG99 Marine Green	G17 Forest Green	G99 Olive	BG18 Teal Blue
	G19 Bright Parrot Green		BG23 Coral Sea
			BG29 Aqua Mint
			BG32 Aqua Mint
			BG34 Horizon Green
			B0000 Pale Celestine
			B32 Pale Blue
			B000 Pale Porcelain Blue
			B34 Manganese Blue
			B00 Frost Blue
			B37 Antwerp Blue
			B01 Mint Blue
			B39 Prussian Blue
			B02 Robin's Egg Blue
			B41 Powder Blue
			B04 Tahitian Blue
			B45 Smoky Blue
			B05 Process Blue
			B52 Soft Greenish Blue
			B06 Peacock Blue
			B60 Pale Blue Gray
			B12 Ice Blue
			B63 Light Hydrangea
			B14 Light Blue
			B66 Clematis
			B16 Cyanine Blue
			B69 Stratospheric Blue
			B18 Lapis Lazuli
			B79 Iris
			B21 Baby Blue
			B91 Pale Grayish Blue
			B23 Phthalic Blue
			B93 Light Crockery Blue
			B24 Sky
			B95 Light Grayish Cobalt
			B26 Cobalt Blue
			B97 Night Blue
			B28 Royal Blue
			B99 Agate
			B29 Ultramarine
			E0000 Floral White
			E33 Sand
			E57 Light Walnut
			E000 Pale Fruit Pink
			E34 Toast
			E59 Walnut
			E00 Cotton Pearl
			E35 Chamois
			E70 Ash Rose
			E01 Pink Flamingo
			E37 Sepia
			E71 Champagne
			E02 Fruit Pink
			E39 Leather
			E74 Cocoa Brown
			E07 Light Mahogany
			E41 Pearl White
			E79 Cashew
			E08 Brown
			E42 Sand White
			E81 Ivory
			E09 Burnt Sienna
			E43 Dull Ivory
			E84 Khaki
			E11 Darky Beige
			E44 Clay
			E87 Fig
			E13 Light Suntan
			E47 Dark Brown
			E89 Pecan
			E15 Dark Suntan
			E49 Dark Bark
			E93 Tea Rose
			E17 Reddish Brass
			E50 Egg Shell
			E95 Tea Orange
			E18 Copper
			E51 Milky White
			E97 Deep Orange
			E19 Redwood
			E53 Raw Silk
			E99 Baked Clay
			E21 Soft Sun
			E55 Light Camel
			E23 Hazelnut
			E25 Canebe Cocoa
			E27 Milk Chocolate
			E29 Burnt Umber
			E30 Bisque
			E31 Brick Beige

F	
FRV1 Fluorescent Pink	FV2 Fluorescent Dull Violet
FYR1 Fluorescent Orange	FYG2 Fluorescent Dull Yellow Green
FY1 Fluorescent Yellow Orange	FBG2 Fluorescent Dull Blue Green
FY1 Fluorescent Yellow Orange	FB2 Fluorescent Dull Blue
FY1 Fluorescent Yellow Orange	FB2 Fluorescent Dull Blue



**Classification of Color Family**

Chromatic colors are split into basic 10 levels (0-9). The color family E represents earthy/brownish colors. The earth colors were separated as specific group to select the colors intuitively. Although gray is actually an achromatic color, Copic makes many different shades of gray, in four color families.

BV: Blue Violet  
 V: Violet  
 RV: Red Violet  
 R: Red  
 YR: Yellow Red  
 Y: Yellow  
 YG: Yellow Green  
 G: Green  
 BG: Blue Green  
 B: Blue  
 E: Earth  
 C: Cool Gray  
 N: Neutral Gray  
 T: Toner Gray  
 W: Warm Gray  
 A: Achromatic  
 F: Fluorescent

**[Appropriate storage method for Copic-artwork]**  
Keep it away from direct sunlight/ultraviolet rays as much as possible. Store in a dry, cool dark place.

**[About the combined use of Copic and other art materials]**  
Always check the compatibility before start your project.

\*Characteristic of dye ink: Dye is artificial material made through chemical processes and it's not as archival as pigment products. Dye has a material property of discoloring itself. Also dye is susceptible to ultraviolet rays and high temperatures, in general, Copic ink is dye ink and if artwork with Copic is exposed to direct sunlight or fluorescent light, ink will gradually fade and color will change.

**COPIC collection** Copic Collection

App for managing your Copic collection

iOS Android

Quick and easy access  
The smartest way to manage your collection

Printed colors in this color listing are different from actual colors of marker ink.

# COPIC 358 colors

[358 colors]

Copic Sketch is the most popular among all the Copic markers. It comes in the widest range of colors, and features Medium Broad and flexible Super Brush nib combination. Ideal for illustration use.



358 colors (including #0 Colorless Blender)

Copic Sketch empty marker

- Alcohol based ink
- Medium Broad nib and Super Brush nib
- Oval barrel
- Nib options are available
- Refillable
- Compatible with Copic Airbrush System

For design/illustrations/manga/painting/craft/ educational use Recommended for professionals/enthusiasts

## Copic Sketch Manga Illustration 24 Colors

This well-balanced 24 colors set contains basic colors and colors useful for blending. Highly recommended for beginners of comic illustrations.

G03	YR15	E84	B04	BV13	N-6
R17	YR01	Y18	BG53	B63	N-4
R43	R000	Y04	BG000	BV000	N-2
RV52	R0000	Y000	B41	BV0000	BV20

Includes:  
 \* Coloring Guide  
 \* Line art for coloring practice  
 In the Coloring Guide, acclaimed illustrator Babiry reveals a handful tips and ideas so that you can learn all the basic technique for comic illustrations.



G17	B14	B29	B39	E09	100	V09	RV11	R08	YR04	Y13	YG03	<b>Copic Sketch 12 Colors Set</b>
C-00	C-0	C-1	C-2	C-3	C-4	C-5	C-6	C-7	C-8	C-9	C-10	<b>Copic Sketch 12 Colors Set CG</b>
W-00	W-0	W-1	W-2	W-3	W-4	W-5	W-6	W-7	W-8	W-9	W-10	<b>Copic Sketch 12 Colors Set WG</b>

V09	RV11	RV29	R02	R08	YR04	YR24	Y11	Y13	Y15	YG03	G07	<b>Copic Sketch 36 Colors Set A</b>
G17	G21	G28	B05	B06	B14	B29	B32	B39	E09	E29	E33	Includes the basic colors commonly-used in the field of design. If you want to color the portrait or characters of manga, you will need to get some skin tone colors additionally.
C-1	C-3	C-5	C-7	C-9	W-1	W-3	W-5	W-7	W-9	100	110	

BV08	V04	V06	V09	RV04	RV09	RV11	RV19	RV29	R02	R08	R27	<b>Copic Sketch 72 Colors Set A</b>
R32	R37	YR00	YR04	YR07	YR09	YR14	YR23	YR24	Y02	Y06	Y11	Includes the basic colors commonly-used in the field of design. These vivid colors have broad utility – Most of all, this set is ideal for use in illustration. For coloring portraits, or characters of manga, you will need to get some skin tone colors additionally.
Y13	Y15	Y21	Y26	YG03	YG13	YG91	YG95	G07	G16	G17	G21	

BV00	BV04	BV23	BV31	V12	V15	V17	RV06	RV21	RV34	R20	R24	<b>Copic Sketch 72 Colors Set B</b>
R29	R39	R59	YR02	Y00	Y08	Y17	YG07	YG11	YG17	YG41	YG67	A well-balanced set from every color family. Very useful for coloring the portraits or manga characters since this set includes a variety of "earth colors".
G00	G02	G05	G12	G14	G29	G85	BG02	BG11	BG13	BG32	BG45	

RV02	RV10	RV13	RV14	RV17	RV25	RV32	R00	R05	R11	R17	R35	<b>Copic Sketch 72 Colors Set C</b>
YR16	YR18	YR21	Y19	Y23	Y38	YG01	YG05	YG09	YG21	YG23	YG25	Contains a rich selection of gray. With a combination of Copic Sketch 72 Color Set A, B and C can cover the full lineup (214 colors) of Copic Classic.
YG45	YG63	YG97	YG99	G09	G19	G20	G24	G40	G82	BG05	BG34	

BV000	BV02	BV11	BV13	BV17	BV20	BV25	BV29	V01	V05	V91	V95	<b>Copic Sketch 72 Colors Set D</b>
V99	RV23	RV42	R000	R12	R14	R22	R30	R43	R46	YR000	YR20	This set includes a variety of natural/muddy colors commonly-used in illustration. Using light colors from the 000 blending group will extend your range of expression.
YR31	YR61	YR65	YR68	Y04	Y28	Y32	Y35	YG00	YG06	YG93	G94	

BV0000	BV01	BV34	V0000	V000	V20	V22	V25	V28	V93	RV0000	RV000	<b>Copic Sketch 72 Colors Set E</b>
RV00	RV52	RV55	RV63	RV66	RV69	RV91	RV93	RV95	RV99	R0000	R01	A perfect set for color illustration. Contains a broad range of 000 light colors, wine-colors and natural colors. Highly recommended for crafters too.
R21	R56	R81	R83	R85	R89	YR0000	YR01	YR12	YR15	YR27	YR30	

# COPIC ciao

## [180 colors]

Copic Ciao provides the same great quality and experience as Sketch, but at a more attractive price.



180 colors (including #0 Colorless Blender)

Alcohol based ink Medium Broad nib and Super Brush nib ※Not compatible with Copic Airbrush System

Round barrel Nib options are available Refillable Child-safe cap

For design/illustrations/manga/painting/craft/ educational use Recommended for beginners

### Copic Ciao: 180 Colors

#### 72 Color Set A

36 Color Set A

36 Color Set B

#### 72 Color Set B

36 Color Set C

36 Color Set D

36 Color Set E

72 Color Set A is a combination of 36 Color Set A and B.

72 Color Set B is a combination of 36 Color Set C and D.

All 180 colors of Copic Ciao will become completed with a combination of 36 Color Set A, B, C, D and E.

### Copic Ciao Starters' 12 Colors Set

The 12 essential colors of Copic Ciao are selected for beginners. Copic ink will remain clean even when mixed. Your possibility is limitless even with these few colors! This set contains the same 12 colors featured in "START WITH 12 COLORS" guide book.

RV21 R00 YR31 E31 W-2 0  
R35 E93 Y02 BG23 B02 BV31



#### COPIC OFFICIAL GUIDE BOOK

#### START WITH 12 COLORS! COPIC ILLUSTRATION FOR BEGINNERS

Author: Babiry/Too Marker Products  
Publisher: Maar-Sha  
Spec: B5 size/ 68 pages

Official guidebook for Copic beginners! Popular illustrator Ms. Babiry explains Copic techniques in a comprehensible way. The line arts are contained so that you can start coloring immediately.



©chadarumi

### Copic Ciao 12 Colors Set

YG06 G17 BG09 B29 E29 100 BV08 V09 RV04 R29 YR07 Y06

Copic Ciao 12 Colors Set

BV00 BV02 RV02 R20 R29 YR02 YR07 Y00 Y06 YG03 YG06 G00  
G05 BG09 BG23 B00 B24 B29 E00 E21 E29 E37 C-3 100

### Copic Ciao 24 Colors Set

A well-balanced 24 colors set for the beginner of illustrations with Copic markers.

BV00 BV02 BV08 V04 V09 V12 RV02 RV04 RV10 R20 R29 R32  
YR02 YR07 YR20 Y00 Y06 Y17 YG03 YG06 YG11 G00 G05 G17  
BG01 BG09 BG23 B00 B24 B29 E00 E21 E29 E37 C-3 100

### Copic Ciao 36 Colors Set A

This set of vivid colors contains a variety of greens and purples.

BV04 V17 RV21 RV23 RV29 RV42 R02 R27 R59 YR00 YR04 Y02  
Y08 YG41 YG67 G02 G21 G99 BG10 BG15 BG93 B05 B23 B32  
B39 E02 E04 E08 E33 E35 E47 E51 C-1 C-5 C-7 0

### Copic Ciao 36 Colors Set B

This set has the best collection of soft, warm colors. Recommended for the users want to improve the technique of blending or gradating.

BV13 BV23 BV31 V00 V06 RV00 RV06 RV13 R00 R05 R11 R22  
YR16 YR23 YR31 YR61 Y11 Y15 Y21 YG00 YG23 YG63 G000 G07  
G14 BG05 BG34 B02 B12 B60 B63 E11 E31 E50 E53 E71

### Copic Ciao 36 Colors Set C

Well-balanced set of light/pale colors which are not included in other 36 Color Sets.

BV17 BV29 V15 V91 V95 RV34 RV95 R17 R35 R37 R46 R85  
YR68 Y28 Y38 YG91 YG95 G28 G85 G94 BG49 BG96 B45 B93  
B95 B97 E43 E49 E57 E77 E93 E95 W-1 W-3 W-5 W-7

### Copic Ciao 36 Colors Set D

Well-balanced set of dark colors which are not included in other 36 Color Sets.

BV000 BV25 V01 V05 RV14 RV69 R000 R14 R81 YR000 YR15 Y000  
Y35 YG09 YG17 G29 G82 BG000 BG13 BG72 B000 B18 B28 B99  
E000 E15 E18 E25 E40 E41 E59 E79 C-0 C-2 W-0 W-2

### Copic Ciao 36 Colors Set E

Includes a wide range of neutral colors for the experienced users.

BV00 BV02 BV04 BV08 V04 V09 V12 V17 RV02 RV04 RV10 RV21  
RV23 RV29 RV42 R02 R20 R27 R29 R32 R59 YR00 YR02 YR04  
YR07 YR20 Y00 Y02 Y06 Y08 Y17 YG03 YG06 YG11 YG41 YG67  
G00 G02 G05 G17 G21 G99 BG01 BG09 BG10 BG15 BG23 BG93  
B00 B05 B23 B24 B29 B32 B39 E00 E02 E04 E08 E21  
E29 E33 E35 E37 E47 E51 C-1 C-3 C-5 C-7 0 100

### Copic Ciao 72 Colors Set A

A combination of 36 Color Set A and B. Recommended for everybody from beginners to experts.

BV13 BV17 BV23 BV29 BV31 V000 V06 V15 V91 V95 RV000 RV06  
RV13 RV34 RV95 R00 R05 R11 R17 R22 R35 R37 R46 R85  
YR16 YR23 YR31 YR61 YR68 Y11 Y15 Y21 Y28 Y38 YG00 YG23  
YG63 YG91 YG95 G000 G07 G14 G28 G85 G94 BG05 BG34 BG49  
BG96 B02 B12 B45 B60 B63 B93 B95 B97 E11 E31 E43  
E49 E50 E53 E57 E71 E77 E93 E95 W-1 W-3 W-5 W-7

### Copic Ciao 72 Colors Set B

A combination of 36 Color Set C and D. Includes a wide range of neutral colors.

# COPIC classic

## [214 colors]

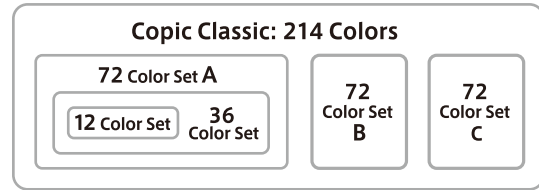
The Good Design Long Life Design Award winning product

Copic Classic is the very first marker of Copic family. For decades, Classic has been favored by professional designers of architecture/product/fashion/interior/etc all around the world.



214 colors (including #0 Colorless Blender)  
+Copic Classic empty marker

- Alcohol based ink
- Broad nib and Fine nib
- Compatible with Copic Airbrushing System
- Square barrel
- Nib options are available
- Refillable
- For design/illustrations/educational use
- Recommended for professionals/enthusiasts



©Testuo Fukuda

V09	RV11	R08	YR04	Y13	YG03	G17	B14	B29	B39	E09	100
-----	------	-----	------	-----	------	-----	-----	-----	-----	-----	-----

### Copic Classic 12 Colors Set

This is a trial set which includes 12 primary colors commonly-used in the field of design.

C-0	C-1	C-2	C-3	C-4	C-5	C-6	C-7	C-8	C-9	C-10	100
-----	-----	-----	-----	-----	-----	-----	-----	-----	-----	------	-----

### Copic Classic 12 Colors Set CG

Includes various Cool Grays, and Black. Commonly used in education field.

N-0	N-1	N-2	N-3	N-4	N-5	N-6	N-7	N-8	N-9	N-10	110
-----	-----	-----	-----	-----	-----	-----	-----	-----	-----	------	-----

### Copic Classic 12 Colors Set NG

Includes various Neutral Grays, and Special Black.

T-0	T-1	T-2	T-3	T-4	T-5	T-6	T-7	T-8	T-9	T-10	0
-----	-----	-----	-----	-----	-----	-----	-----	-----	-----	------	---

### Copic Classic 12 Colors Set TG

Includes various Toner Grays, and Colorless Blender.

W-0	W-1	W-2	W-3	W-4	W-5	W-6	W-7	W-8	W-9	W-10	0
-----	-----	-----	-----	-----	-----	-----	-----	-----	-----	------	---

### Copic Classic 12 Colors Set WG

Includes various Warm Grays, and Colorless Blender.

V09	RV11	RV29	R02	R08	YR04	YR24	Y11	Y13	Y15	YG03	G07
G17	G21	G28	B05	B06	B14	B29	B32	B39	E09	E29	E33
C-1	C-3	C-5	C-7	C-9	W-1	W-3	W-5	W-7	W-9	100	110

### Copic Classic 36 Colors Set

Includes the basic colors commonly-used in the field of design. Acclaimed as one of the best teaching material in art education.

BV08	V06	V09	RV04	RV09	RV11	RV17	RV19	RV29	R02	R08	R27
R32	R37	YR00	YR04	YR07	YR09	YR14	YR18	YR23	YR24	Y06	Y11
Y13	Y15	Y21	Y26	YG03	YG13	YG23	YG91	YG95	YG97	YG99	G07
G17	G21	G28	G99	BG09	BG10	BG15	BG18	B05	B06	B14	B23
B26	B29	B32	B34	B37	B39	E09	E29	E33	E37	E44	C-1
C-3	C-5	C-7	C-9	W-1	W-3	W-5	W-7	W-9	0	100	110

### Copic Classic 72 Colors Set A

Includes the plentiful basic colors which are commonly-used in the field of design. Great choice for starting your Copic experience.

BV00	V04	RV06	RV14	R17	R20	R29	R35	Y00	Y02	Y17	YG01
YG17	G02	G16	G29	BG02	BG05	BG13	BG99	B00	B01	B02	B04
E04	E07	E11	E13	E15	E19	E25	E27	E31	E34	E40	E49
C-0	C-2	C-4	C-6	C-8	C-10	N-0	N-1	N-2	N-3	N-4	N-5
N-6	N-7	N-8	N-9	N-10	T-0	T-1	T-2	T-3	T-4	T-5	T-6
T-7	T-8	T-9	T-10	W-0	W-2	W-4	W-6	W-8	W-10	100	110

### Copic Classic 72 Colors Set B

A well-balanced set which includes a wide variety of primary colors, pale tones and grays.

BV04	BV23	BV31	V12	V15	V17	RV02	RV10	RV13	RV21	RV25	RV32
RV34	R00	R05	R11	R24	R39	R59	YR02	YR16	YR21	Y08	Y19
Y23	Y38	YG05	YG07	YG09	YG11	YG21	YG25	YG41	YG45	YG63	YG67
G00	G05	G09	G12	G14	G19	G20	G24	G40	G82	G85	BG11
BG32	BG34	BG45	BG49	B12	B16	B18	B21	B24	B41	B45	E00
E02	E21	E35	E39	E41	E43	E51	E53	E55	E57	E59	E77

### Copic Classic 72 Colors Set C

Contains a rich selection of neutral colors for the experienced users. Your Copic Classic collection is completed if you use this set in combination with the 72 Color Set A and B.

# COPIC sketch 3/6 colors set

## COPIC ciao 6colors set / Doodle set

### [Copic Sketch Set]

#### ● Copic Sketch 6 colors Set



#### Sea & Sky

B24 B28 BG10 BG13 BG72 BG78

#### Skin Tones

E000 E00 E11 E15 E18 E93

#### Secondary Tones

G02 G09 V04 V09 YR61 YR68

#### Bold Primaries

100 B29 E29 G28 R29 Y15

#### Perfect Primaries

B00 B04 R43 R46 Y13 Y19

#### Pale Pastels

BG11 BG15 BV0000 BV01 YR12 YR31

#### Earth Essential

B41 B45 E34 E39 YG13 YG17

#### Floral Favorites 1

R01 RV13 RV69 V05 YG41 YG45

#### Floral Favorites 2

B63 B66 RV23 RV25 RV29 YR21

#### ● Copic Sketch 5 colors Set + Copic Multiliner SP set



#### Sketchinag Grays

N-0 N-2 N-4  
N-6 N-8

Copic Multiliner SP  
● Black 0.5mm

#### Blending Basics

0 B0000 N-1  
RV10 Y0000

Copic Multiliner SP  
● Black 0.3mm

#### ● Copic Sketch 3 colors Set



#### Color Fusion

1 V20 V22 V25 4 YR20 YR23 YR27  
2 RV000 RV52 RV55 5 G40 G43 G46  
3 E04 R56 R59 6 B01 B04 B06

### [Copic Ciao Set]

#### ● Copic Ciao 6 colors Set



#### Bright

R32 Y06 YG06 B00 B05 V17

#### Primary

R37 YR04 Y15 G07 B29 BV08

#### Pastels

RV21 V04 Y21 YG11 B23 BG15

#### Sea

0 100 C-3 G21 BG72 B93

#### Skin

E000 E00 E11 E15 E18 E93

#### ● Doodle Kit

Copic Ciao 5 colors + Copic Multiliner 2 colors set



#### Nature

B95 BV13 E04 V12 G82

Copic Multiliner  
● Olive ● Wine 0.3mm



#### Rainbow

B02 G02 Y00 YR02 R22

Copic Multiliner  
● Black ● Cobalt 0.3mm



#### People

E25 E33 E50 RV42 BV000

Copic Multiliner  
● Warm Gray ● Brown 0.3mm

#### ● Doodle Pack

Copic Ciao 2 colors + Copic Multiliner + atyouSpica Glitter Pen set



#### Red

RV29 RV69

atyouSpica Glitter  
● Black  
Copic Multiliner  
● Black 0.3mm

#### Blue

B12 B24

atyouSpica Glitter  
● Body Blue  
Copic Multiliner  
● Cobalt 0.3mm

#### Yellow

Y11 Y17

atyouSpica Glitter  
● Buttermilk  
Copic Multiliner  
● Warm Gray 0.3mm

#### Purple

BV00 BV04

atyouSpica Glitter  
● Pink  
Copic Multiliner  
● Wine 0.3mm

#### Turquoise

BG10 BG13

atyouSpica Glitter  
● Turquoise  
Copic Multiliner  
● Cool Gray 0.3mm

#### Brown

E31 E35

atyouSpica Glitter  
● Chocolate  
Copic Multiliner  
● Brown 0.3mm

#### Green

YG41 G14

atyouSpica Glitter  
● Olive  
Copic Multiliner  
● Olive 0.3mm

#### Pink

R81 R85

atyouSpica Glitter  
● Blossom  
Copic Multiliner  
● Wine 0.3mm

# COPICink NEW

## [358 colors]

All 358 marker colors have a matching ink refill.  
You can also create your custom colors using empty bottle.



Contains: 12ml  
358 colors (including #0 Colorless Blender)  
+Empty bottle

### CAUTION

- ⓄCopic Ink is alcohol based and combustible. Keep the product away from high temperatures or direct sunlight.
- ⓄAvoid contact with eyes, mouth and clothing.
- ⓄIf the Copic Ink has entered the eyes, do not rub, and flush with water immediately. Seek medical attention if necessary.
- ⓄPlease be careful when using this product. If you grip the body too tightly, ink may spill out from the nozzle.
- ⓄAlways close the cap after use.

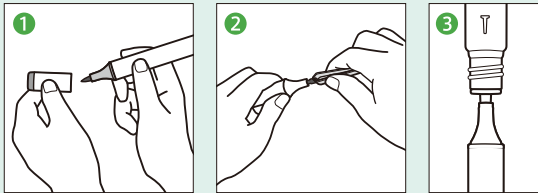


### Copic Colorless Blender (200ml)

Economy-size Copic Colorless Blender (No. 0).  
Comes in handy when you create a lighter color and it's also a good tool for cleaning up your markers.  
200ml(c.c.)

## How to Refill Marker

- 1 Uncap both ends of the marker.
- 2 Remove broad nib from marker.
- 3 Insert the nozzle into the marker body to fill with ink.
- 4 Insert back the nib and the cap.

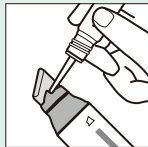


※Make sure to check the fullness by measuring guides (1cc/1ml per guide) on the bottle every few drops.

※Before refilling your marker, remove the cap of both ends to make ink thoroughly penetrates inner cotton (ink reservoir). Do not overfill the marker with too much ink. Overfilled ink may drip onto your work.

### For Copic Wide:

Hold Copic Wide at an angle, then place the ink nozzle in a notch and drip Copic Ink onto the nib.



	Sketch	Ciao	Classic	Wide
The number of times that one bottle can refill	Applox. 7 times	Applox. 9 times	Applox. 5 times	Applox. 3,5 times
Rough indication amount per refill	Applox. 1.8ml	Applox. 1.4ml	Applox. 2.5ml	Applox. 3.5ml
Amount of ink needed for Copic empty marker	Applox. 3ml	—	Applox. 4ml	Applox. 6ml

### CAUTION

- ⓄCopic Ink is alcohol based and combustible. Keep the product away from high temperatures or direct sunlight.
- ⓄPlease pour ink carefully and pay attention to the markings on the bottle. Do not overfill. It may cause leakage of ink.

## Copic empty marker [3 Types]

These empty marker allow you to expand your collection by using Copic Ink to fill them up, or mix some inks to create your own custom colors.

- Copic Classic empty marker
- Copic Sketch empty marker
- Copic Wide Original (empty marker)

### Copic Wide Original (empty marker)

Copic Wide is the best choice for coloring large areas with consistent stroke. Ideal for rendering in product design, and drawing architectural perspectives.

- Extra Broad nib (21mm)    Nib options are available    Refillable
- For design/illustrations/educational use



Expand your color collection with Copic Ink and Wide Original (empty marker).

## Spare Nibs & Optional Nibs

These nibs allow for longevity of your markers.

### Spare Nibs for Copic Sketch & Ciao

Exclusive spare nibs for Copic Sketch & Copic Ciao marker.

- Super Brush (3pcs/pack)
- Medium Broad (10pcs/pack)

### Optional Nibs for Copic Sketch

Fits light gray end (Medium Broad nib side) of Copic Sketch.

- Sketch Fine (3pcs/pack)

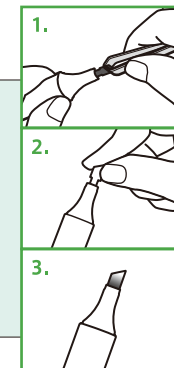
### Spare Nibs for Copic Wide

- Spare Nibs for Copic Wide Extra Broad (2pcs/pack)

- Tweezer (1pc/pack)

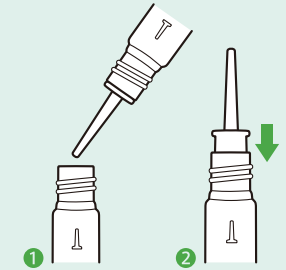
## Replacing the nib

1. Using the tweezers, pull the nib out of the marker slowly to avoid splash of ink.
2. Carefully insert the new nib.
3. It may take a little time until the ink penetrates the new nib and the color becomes stable.



## How to Blend Ink

- 1 Pour your choice of ink into the empty bottle.  
\*The bottle is marked per 1ml.
- 2 Securely insert the nozzle until you hear a clicking sound.  
\*The nozzle should be hard to remove once it is inserted into the bottle.



### Spare/Optional Nibs for Copic Classic

You can replace the standard nib for Copic Classic with a variety of Optional nibs according to the intended use. Except for standard (Spare) nibs, identification sticker is included.

- For thick line drawing  
Exclusive replacement nibs for Broad nib  
10pcs/pack  
(Brush type:3pcs/pack)

- For fine line drawing  
Exclusive replacement nibs for Fine nib  
10pcs/pack

- [Standard Broad]  
Spare for standard Broad nib

- [Standard Fine]  
Spare for standard Fine nib

- [Soft Broad]  
Rounded edge delivers smooth touch

- [Super Fine]  
Plastic-made nib provides extra fine line

- [Calligraphy 5mm]  
Ideal for illustrations and decorative lettering

- [Semi Broad]  
Broad-type nib with narrower width

- [Round]  
Provides line variation and smooth touch

- [Calligraphy 3mm]  
Ideal for illustrations and decorative lettering

- [Brush]  
Responsive and flexible brush nib

### CAUTION

- ⓄBe careful not to spill the ink when you pull the nib out of the marker.
- ⓄIf the amount of ink is decreased in inner cotton, the penetration of ink into the new nib will be slower than usual. Refill with the ink in that case.

# Copic Multiliner [10 Colors]

The all-purpose Copic Multiliner inking pen is pigment-based and Copic-proof, meaning that once dry, the ink will not bleed when colored over with Copic markers. Multiliner comes in a variety of colors and pen sizes and it's ideal for illustrations, manga inking or any projects requiring consistent line flow and precision.

Water based pigment ink (becoming waterproof when dry) Acid-free For illustrations/manga inking/sketch/writing use



●Black Pen size : 0.03/0.05/0.1/0.3/0.5/0.8/1.0mm



●Cool Gray Pen size : 0.03/0.05/0.1/0.3/0.5mm



●Warm Gray Pen size : 0.03/0.05/0.1/0.3/0.5mm



●Sepia Pen size : 0.03/0.05/0.1/0.3/0.5mm



●Brown Pen size : 0.03/0.05/0.1/0.3/0.5mm



●Wine Pen size : 0.05/0.1/0.3/0.5mm



●Cobalt Pen size : 0.05/0.1/0.3/0.5mm



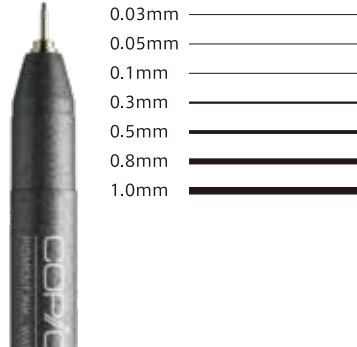
●Olive Pen size : 0.05/0.1/0.3/0.5mm



●Pink Pen size : 0.03/0.05/0.1/0.3/0.5mm



●Lavender Pen size : 0.03/0.05/0.1/0.3/0.5mm



## [Multiliner 4pcs Set]

- Black A-2 Set (0.03/0.05/0.1/0.3)
- Black B-2 Set (0.5/0.8/BS/BM)

- Cool Gray ●Warm Gray ●Sepia
- Brown ●Pink ●Lavender

Pen size: 0.05/0.1/0.3/0.5mm

- 4 Colors Set
- Pen size: all 0.3mm
- Sepia/Wine/Cobalt/Olive



## [Brush type]

BS (brush pen for fine line) BM (brush pen for thick line)



- Black ●Sepia

## [Copic Multiliner CS and CM]

The new Copic Multiliner specially developed for calligraphy/card making purposes! Ink does not blur on the paper and offers a wide range of representation from sharp fine lines to blurred wide lines.



©Makiko Odawara

CS: Calligraphy S Ideal for intricate, detailed expressions.

CM: Calligraphy M The most used linewidths in calligraphy.

- Color: Black



- Copic Multiliner Calligraphy 2pcs Set (CS/CM)

## Line Widths of Copic Multiliner

	0.03	0.05	0.1	0.3	0.5	0.8	1.0	BS	BM	CS	CM
Black	●	●	●	●	●	●	●	●	●	●	●
Cool Gray	●	●	●	●	●	—	—	—	—	—	—
Warm Gray	●	●	●	●	●	—	—	—	—	—	—
Sepia	●	●	●	●	●	—	—	●	●	—	—
Brown	●	●	●	●	●	—	—	—	—	—	—
Wine	—	●	●	●	●	—	—	—	—	—	—
Cobalt	—	●	●	●	●	—	—	—	—	—	—
Olive	—	●	●	●	●	—	—	—	—	—	—
Pink	●	●	●	●	●	—	—	—	—	—	—
Lavender	●	●	●	●	●	—	—	—	—	—	—

## CAUTION

If the Multiliner's ink bleeds when colored over with Copic markers, it's thought that the root cause is insufficient fixation with paper. In that case let the ink dry well then carefully rub off pigment on the surface of paper with an eraser.

## GENERAL CAUTION

- ◎ Do not drop or shake the pens because the ink may leak out.
- ◎ Open the cap carefully to avoid splashing ink.
- ◎ The pen will dry out fast if it is left uncapped. Always recap tightly after use.
- ◎ Do not store in a high temperature. ◎Keep Out of Reach of Children.



# Copic Multiliner SP

Copic Multiliner SP pen is designed for a lifetime of use – Its ink cartridge and nib can be replaced as needed.

The durable aluminum body feels smooth in your hand, and tips are very sturdy even in smaller pen sizes. This pen contains the same Copic-proof, black pigment ink as Multiliner.

Water based pigment ink (becoming waterproof when dry) Replacable nib

Replacable ink cartridge Acid-free

For rendering/illustrations/manga inking/sketch/writing use



Pen size : 0.03/0.05/0.1/0.2/0.25/0.3/0.35/0.5/0.7mm/BS

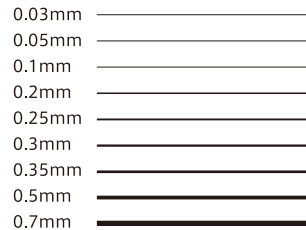
## [Single items]



Nibs	0.03	0.05	0.1	0.2	0.25	0.3	0.35	0.5	0.7	BS
		2pcs/pack		2pcs/pack		1pc/pack				
Ink	Cartridge A			Cartridge B						
Tool	SP Changer (replacement tool for nib and ink cartridge)									

### CAUTION

- Do not replace the nib and cartridge on your project.
- Do not insert and remove the nib and cartridge unnecessarily.
- Store the spare ink cartridges horizontally.
- When replacing a nib, make sure the size is same.



### [Set]

●Copic Multiliner SP 10A Set (includes all pen sizes)

## How to replace the nibs

### 1. Using a coin:



● Place a coin into the groove of metal nib holder and remove the nib with thumb as illustrated.

### 2. Using SP Changer:



● Place the small end of a SP Changer into the groove of metal nib holder and remove the nib with thumb as illustrated.

※Remove the nib by slowly pushing it with thumb, in the direction of the arrow. Do not try to remove the nib with the hand holding a SP Changer, otherwise the nib will pop out.

● Insert spare nib. The ink will flow after a while. If the ink does not come out, the nib may not have contacted the ink reservoir properly. Remove the nib and try again.

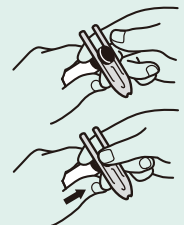
## How to replace the ink cartridges

### 1. Using a coin:



● Place a coin into the groove of ink cartridge's end cap and remove it with thumb as illustrated. Then replace with new ink cartridge. Push the cartridge straight into the body and you will hear a click.

### 2. Using SP Changer:



● Place the large end of a SP Changer into the groove of ink cartridge's end cap and remove it with thumb as illustrated. Then replace with new ink cartridge. Push the cartridge straight into the body and you will hear a click.

# Copic Gasenfude Brush Pen

Gasenfude brush pen has a flexible synthetic brush nib which creates expressive line variations. Water based pigment ink is Copic-proof - When the ink dries, it will not bleed when colored over with Copic markers.

Water based pigment ink (becoming waterproof when dry) Acid-free For illustrations/sketch/card making/writing use



### CAUTION

Do not drop or shake the pen because the ink may leak out. The stains on clothes may not wash off. Always carry with the nib upward.

# Copic Drawing Pen F Series

Copic Drawing Pen is made for those who prefers the feel of a fountain pen, but you don't need to worry about the mess of a dipping well. This pen provides a variety of line sizes by simply changing the writing pressure.

Water based pigment ink (becoming waterproof when dry) Acid-free For manga inking/sketch/writing use



●Black ●Sepia

Line width can be adjusted by the pen pressure

### CAUTION

- Test the pen until the ink flows smoothly.
- Not recommended for use with water colors.

## Care for Copic Drawing Pen

Copic Drawing Pen is a delicate writing instrument. Like a fountain pen, special care should be taken when handling Copic Drawing pen, specially super fine F01.

Use Drawing pen every day, even if it is very short time. It contributes to the maintenance of condition of tip.

Always recap tightly after use. The pen will dry out if it is left uncapped.

If it isn't writing properly, check that the flow-channel is not clogged with fibers of paper. To remove clogged fibers, pull away the tip from the pen and wipe gently with paper towels.

\* Never shake the pen because the ink may leak out.

# PAPER SELECTIONS

When you seek to select the best paper, you will be faced with an overwhelming number of options. The result would be completely different depends on the type or color of paper - Copic Paper Selections helps you to find the right choice.

A4 size (210×297mm)



## ●PM Paper

20 sheets/pack Thickness: 68g/m<sup>2</sup>

This thin, coated paper is suitable for tracing, inking or traditional marker rendering with colored pencil/pastel accents. Doesn't bleed through. Great for clean, crisp, bold colors.

This high quality paper with smooth texture is great for blending colors.



## ●Premium Bond Paper

20 sheets/pack Thickness: 157g/m<sup>2</sup>

High-quality paper with super-smooth texture. Slightly off-white in tone. This uncoated, medium weight paper is great for blends and special effects.



Its outstanding whiteness can get the most out of vividness of Copic.



## ●Custom Paper

20 sheets/pack Thickness: 150g/m<sup>2</sup>

High-quality copy paper with super-smooth texture. Excellent color property. Suitable for manga and general illustration. Great for blends and special effects.

Easy to blend, good for gradation effect.



## ●Thick Marker Paper

20 sheets/pack Thickness: 186.7g/m<sup>2</sup>

Soft, thick, uncoated paper with slightly textured surface. Great for watercolor, pencil, and mixed-media. Easy to blend, good for special effects like feathering technique.



The Japanese paper-like soft fiber is ideal for expression of watercolors.



## ●Soft Watercolor Paper

5 sheets/pack Thickness: 100g/m<sup>2</sup>

This medium weight, coated paper features extra soft fibers for a watercolor look. Doesn't bleed through. Good for soft color expression.

# Drawing papers



※Each PM Pad is slightly larger than the standard size.

## PM Pad White 50 sheets/pad

This long-seller paper pad features non-bleedthrough PM Paper which is extremely versatile and suitable for a variety of mediums such as marker, pastel and pencil. The paper has moderate transparency and good developed colors.

B2/B3/B4/B5  
A2/A3/A4



## Copic Sketchbook Acid-free 30 sheets/book

Copic Sketchbook features a high-quality Premium Bond Paper. This medium weight paper with super-smooth texture is great for color blending and special effects.

Available in two sizes.

**L size**(240×305mm) **S size**(148×185mm)

**Square**(110×110mm) **NEW**



## Copic Shikishi Illustration Board Acid-free

Copic Shikishi Illustration Board made from high quality Custom Paper laminated to a hard board backing. Clean white, smooth surface is ideal for coloring with marker and it provides bright coloration and good blendability. Also it's great for inking with pen, and pencil lines are easily erased without damaging paper fibers. 3 sizes are available.

**Large**(273×242mm) **Medium**(212×182mm)

**Small**(136×120mm)



## PM Copy

Standard size PM Paper for photocopying use. Precisely trimmed to prevent a paper jam or powder blow.

50 sheets/pack 250 sheets/pack  
A3/B4/A4 A3/B4/A4



## Copic Coaster Card **NEW**

Acid-free 8cards/pack

Use this Coaster Card as a unique greeting card or a rounded illustration board! High-quality Premium Bond Paper gives an excellent color definition and a super-smooth surface.



## Copic Postcard

Acid-free 20 sheets/pack Thickness: 68g/m<sup>2</sup>  
(100×148mm)

An extremely-thin film is hiding between the layer of white, smooth paper so that the ink does not bleed through to the address side of card.

# Copic Airbrushing System (ABS)

An innovative Copic Airbrushing System (ABS) allows you to easily obtain airbrush effects, and color on a wide variety of surfaces and textures. Simply snap a Sketch or Classic marker into the system and you are ready to go.

Simple airbrushing system

※Copic Ciao cannot be used with ABS.



●Air Can Set



●Air Adaptor Set



Includes:  
Air Grip,  
Air Can 60N



Includes:  
Air Grip,  
Air Adaptor

※Compressor and air hose are sold separately  
※Air pressure must be maintained around 0.3MPa.  
※To connect with Air Adaptor, use G1/8 (PF1/8) air hose.

### CAUTION

◎Make a test spray before creating a background. Most colors will look different when airbrushed, and granular feeling changes depending on applied distance and air pressure.  
◎For continuous, long term spraying, we recommend using the compressor instead.



◎Use in an area with good air circulation and wear a mask when you work.  
◎Keep away from open flame.  
◎To attach Air Grip to Air Can, use the D60.  
◎Do not spray on people or animals.

### [Single parts]



●Air Grip



●Air Can D60N



●Air Adapter

# Copic Opaque White **NEW**

Copic Opaque White has good opacifying properties and provides highlights and details easier than ever. This thick white paint won't bleed into the base color and allows for sharp expression. Great for adding the final touches to your artwork.

※Do not apply colors on top of Opaque White.

●10ml (c.c.) ●6ml (c.c.) with brush



# Storages



\*Markers are sold separately.

### ●Copic Wallet **NEW**

Copic Wallet is a great way to keep Copic markers organized. Folds to stand upright or lay flat. All sizes have a zipper pocket for extra storage. All sizes can hold Copic Classic, Sketch and Ciao markers. for 24/36/72pc



### ●Copic Carrying Pouch

This handy carrying pouch with removable shoulder strap makes transporting your Copic collection easy. Detachable divider and shoulder strap are attached.

Holding up to:  
48pcs of Copic Sketch (50pcs without divider)  
57pcs of Copic Ciao (58pcs without divider)  
34pcs of Copic Classic (35pcs without divider)  
Dimensions: Approx. 120×160mm

### ●Block Stand

This expandable Block Stand will stand vertically or horizontally. Each block holds up to 36 Classic markers.

### ●Wire Stand

This metal wire stand will help you to organize and display your markers stylishly. It holds up to 72 Classic/Sketch markers.



# Copic Plastic Color Solid Chips Set

Copic Plastic Color Solid Chip is an innovative product that facilitates color communication in a variety of occasions. 288 colors were carefully selected so that you can select colors intuitively.



# Books

### ●START WITH 12 COLORS! COPIC ILLUSTRATION FOR BEGINNERS

Author : Babiry/Too Marker Products  
Publisher : Too Marker Products Inc.  
Spec : A4 size / 68 pages / All Color  
Language : English



A long-awaited English version of very popular official Copic guidebook START WITH 12 COLORS! COPIC ILLUSTRATION FOR BEGINNERS! Size is slightly larger than Japanese version, with an improved design and layout.

### ●COPIC MANIACS 1 Manga Illustration Coloring & Materials

Author : Toru Terada / Garu Okada  
Publisher : Too Marker Products Inc.  
Spec : A4 size / 48 pages / All Color  
Languages : English



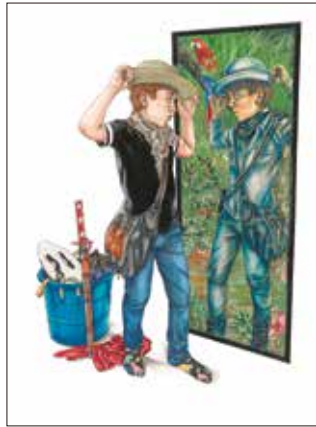
Learn Copic techniques from basics in the most fun way! In this book, many tips and tricks are disclosed by internationally acclaimed professional illustrators Mr. Toru Terada and Ms. Garu Okada.

## ABOUT COPIC AWARD

Copic Award is an event aiming at providing a competitive platform and opportunity for artists around the world to share their diverse artworks created using Copic products. Our mission is to connect Copic fans to inspire each other by creating art.

## The winners of the COPIC AWARD 2019

### Grand Prize



**"The Explorer"**  
by Grace Netanya  
(United States of America)

### Second place



**"永き眠りから覚めて"**  
(Awaken from Eternal Slumber)  
by Hoshimi (Japan)

### Second place



**"Mother"**  
by Rodrigo Matias (Brazil)

## 2019 AWARD PRIZES

### • Grand Prize

A cash award of \$5,000 USD, invitation to the award ceremony in Tokyo, a full 358 set of Copic Sketch markers.

### • Second place

Invitation to the award ceremony in Tokyo, a full 358 set of Copic Sketch markers.

## JUDGES(2019)

Tsutomu Okada  
Junko Koshino  
Arina Tanemura  
Rumiko Tezuka  
Kei Matsushita

## COMING SOON, COPIC AWARD 2020!

### GUIDELINES FOR COPIC AWARD 2020

Entries are accepted between May 1, 2020 - June 30, 2020 (Japan Time)

Selections from the initial and final screening will be announced between August -September 2020 (Japan Time).

Schedule is subject to change.

### ELIGIBILITY

- Anyone can submit their artwork (specify how many artworks can they submit). There are no restrictions for nationality, age, experience, or geographic locations.
- Artwork entry must be an original piece that has not already been made public or entered through another competitive event or exhibition. Artwork displayed for personal exhibit or social media pages are accepted.
- Artwork created must be done using Copic products.
- Artwork that violates intellectual property rights will be disqualified. Upon submitting their piece, artists are solely responsible for any infringement of copyrighted materials.

[copicaward.com](http://copicaward.com)

Please check the official COPIC AWARD website for more detailed information. The judge members and prizes will be announced soon!



   
@COPIC\_AWARD

## How to use copic

You can see basic Copic techniques below!

These are also available on our website, which includes video tutorials and more!

### Creating Gradations



Create a first layer with vertical strokes. Start the second layer from the opposite side before the first layer dries.



Before both colors dry, blend the border with the first layer color.

### Colorless Blender



First, apply the color you want to fade. While the ink is still wet, apply Colorless Blender (No.0) over the top.



The Colorless blender ink will be spread in the entire area and the edge part will be faded.

### Change a nib



Grab the old nib with a pair of tweezers, pull the nib down from the marker. Be aware, ink may squirt out after removal of nib.



Slowly insert the new nib into the marker. Wait until the nib fully soaks the ink.

## You can also check out artist interview and making-of videos!



YouTube  @COPIC\_Official channel

Follow our social media channels for the latest updates!

Learn everything you need to know about Copic!



@COPIC\_Official

[copic.jp/en](http://copic.jp/en)

Download the line drawing for coloring, watch the artists interview videos, and get the latest information about Copic!